

DUO-SYS

SEMI-AUTOMATIC AND PUMP-ACTION CONVERTIBLE SHOTGUN



OPERATION & MAINTENANCE MANUAL

**! READ THE INSTRUCTIONS AND WARNINGS IN THIS MANUAL CAREFULLY BEFORE
USING THIS FIREARM.**

! THIS MANUAL SHOULD ALWAYS ACCOMPANY THIS FIREARM.



CONTENTS

SPECIFICATION

AMMUNITION

NOMENCLATURE

OPERATING INSTRUCTIONS

SAFETY BUTTON

ACTION SELECTION

UNLOADING

LOADING MAGAZINE TUBE

LOADING CHAMBER FROM MAGAZINE TUBE

LOADING MANUALLY / DIRECTLY INTO CHAMBER

FIRING

ACCESSORIES & ADJUSTMENTS

TELESCOPIC STOCK & CHEEK PIECE

REAR SIGHT

CHOKE TUBE & DOOR BUSTER

DIS/ASSEMBLY & MAINTENANCE

FIELD STRIP

FIELD ASSEMBLY

CLEANING

PREVENTIVE/PREDICTIVE REPLACEMENT CYCLES FOR MILITARY & LAW ENFORCEMENT USE

EXPLODED VIEW

PARTS LIST

DETAILED DIS/ASSEMBLY SCHEMATICS

! DETAILED DIS/ASSEMBLY SHOULD ONLY BE PERFORMED BY A QUALIFIED GUNSMITH !

SPECIFICATION

DESCRIPTION:	KHAN ARMS DUO-SYS
CALIBER / CHAMBER:	12 GAUGE / 3" (76 mm) CHAMBER
OPERATING SYSTEM:	SEMI-AUTOMATIC AND PUMP-ACTION CONVERTIBLE. SEMI-AUTOMATIC ACTION; RECOIL OPERATED WITH FRONT SPRING ASSIST. OR PUMP-ACTION MANUAL MODE CONVERTED VIA ACTION SELECTOR RING.
BARREL LENGTH:	14,60" (370 mm)
OVERALL LENGHT:	34,85" (885 mm) WITH STOCK IN SHORTEST POSITION
STOCK TYPE:	RE-ENFORCED POLYMER, GRIP AND TELESCOPIC STOCK WITH ADJUSTABLE CHEEK REST
MAGAZINE CAPACITY:	5 ROUNDS 2¾" (70 mm) SHELLS 4 ROUNDS 3" (76 mm) SHELLS
WEIGHT:	~ 3250 g EMPTY

AMMUNITION

! MAKE SURE THE AMMUNITION YOU LOAD IS PROPER GAUGE AND LENGTH AS IS MARKED ON THE BARREL OF YOUR SHOTGUN: 12 GAUGE / 3" CHAMBER

! NEVER USE AMMUNITION LONGER THAN THE CHAMBER LENGTH: 3" (76 mm)
ONLY USE 2¾" (70 mm) AND 3" (76 mm) SHELLS

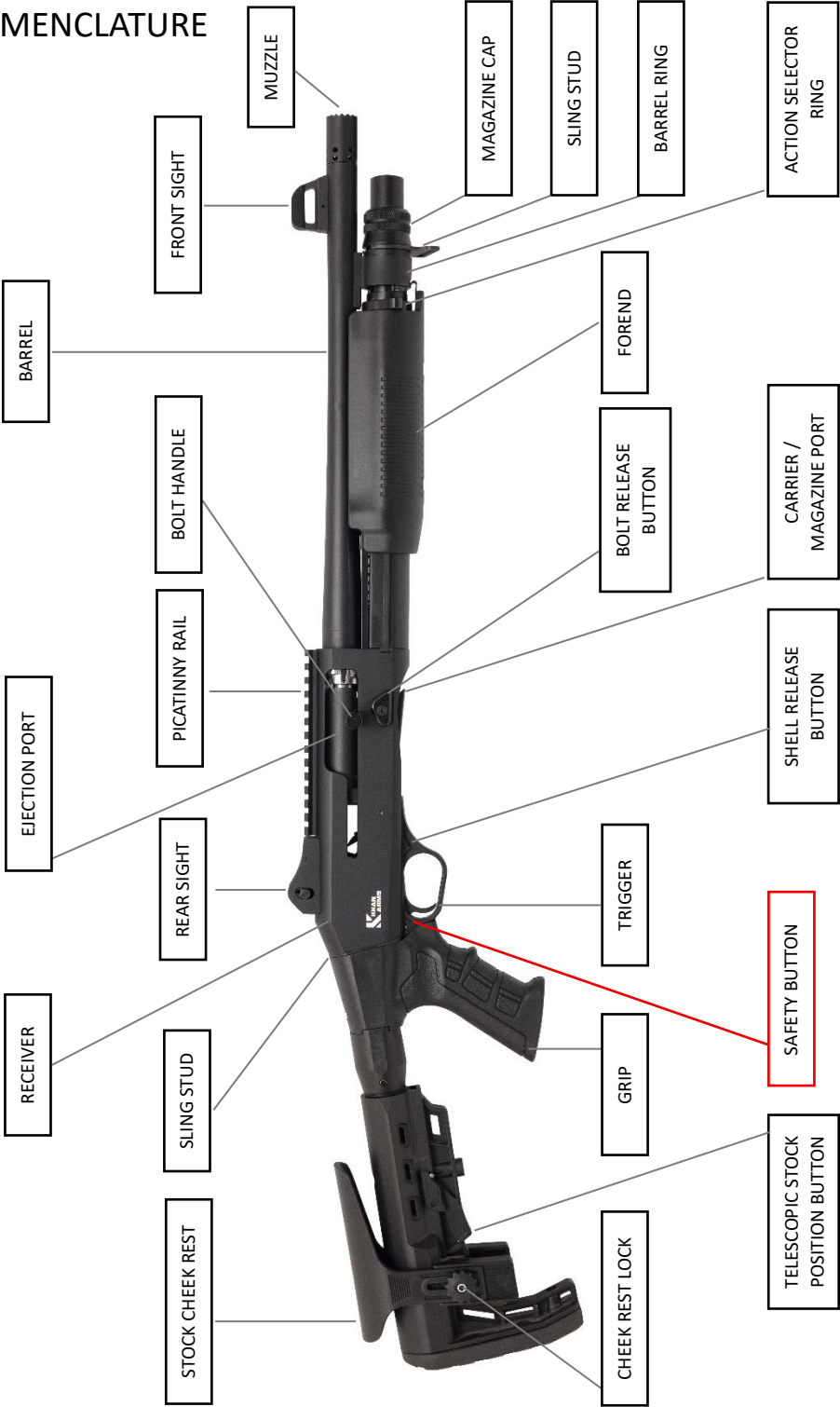
! IN SEMI-AUTOMATIC MODE, MAKE SURE TO USE AMMUNITION THAT GENERATES ENOUGH RECOIL TO FULLY CYCLE THE ACTION MECHANISM.

! AVOID SHOOTING HEAVY LOADS, SPECIFICALLY 3" (76 mm) ROUNDS, IN PUMP-ACTION / MANUAL MODE.

! ONLY USE CLEAN AND DRY AMMUNITION THAT IS SUITABLE FOR USE IN A TUBULAR MAGAZINE. WET-OILY, NON-STANDARD AMMUNITON CAN CAUSE DAMAGE AND INJURY!

! NEVER USE SHELLS THAT HAS A SLUG/BULLET PROTRUDING BEYOND ITS PLASTIC CASE.

NOMENCLATURE



OPERATING INSTRUCTIONS

SAFETY BUTTON

SAFETY BUTTON IS LOCATED AT THE TOP-REAR OF THE TRIGGER GUARD, SHOULD BE MANUALLY MOVED TO THE DESIRED POSITION BY THE OPERATOR.

TO PUT SAFETY 'ON/SAFE' POSITION; BUTTON SHOULD BE PUSHED FROM LEFT SIDE OF THE TRIGGER GUARD SO IT MOVES ALL THE WAY TO THE RIGHT UNTIL IT MOVES NO FURTHER (PROTRUDING FROM RIGHT SIDE OF THE TRIGGER GUARD). CHECK FIG.SB1 FOR REFERENCE.



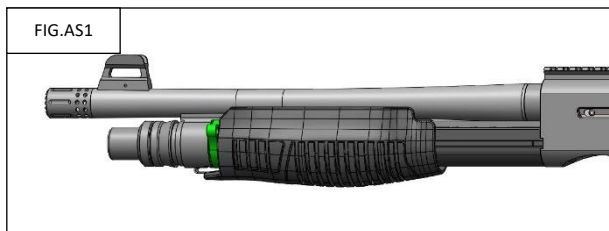
TO PUT THE SAFETY 'OFF/FIRE' POSITION; BUTTON SHOULD BE PUSHED FROM RIGHT SIDE OF THE TRIGGER GUARD SO IT MOVES ALL THE WAY TO THE LEFT UNTIL IT MOVES NO FURTHER (PROTRUDING FROM LEFT SIDE OF THE TRIGGER GUARD). SAFETY BUTTON SHOWS ITS RED STRIP AT 'OFF/FIRE' POSITION ! CHECK FIG.SB2 FOR REFERENCE.



ACTION SELECTION

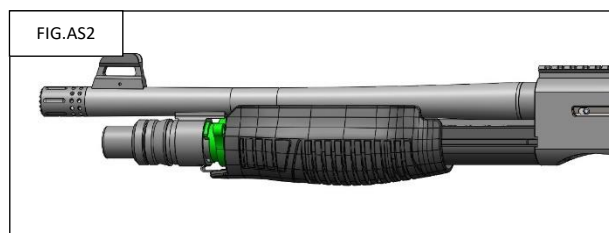
ACTION SELECTOR RING IS LOCATED ON THE FRONT OF THE FOREND. ACTION MODE CAN BE CHANGED MANUALLY BY THE OPERATOR.

FOR 'SEMI-AUTOMATIC' ACTION MODE; WITH THE BOLT CLOSED, TURN THE SELECTOR RING COUNTER-CLOCKWISE AS FAR AS IT WILL GO WITH THE THUMB OF YOUR HAND HOLDING THE FOREND. KEEPING THE SELECTOR RING IN POSITION (TURNED COUNTER-CLOCKWISE) PUSH THE FOREND FORWARD UNTIL THE FRONT OF THE SELECTOR RING SITS INTO THE BARREL RING. RELEASE THE SELECTOR RING SO IT WILL ROTATE CLOCKWISE UNTIL IT REACHES RESTING POSITION, LOCKED INSIDE THE BARREL RING. CHECK FIG.AS1 FOR REFERENCE.



SHOTGUN IS IN 'SEMI-AUTOMATIC' ACTION MODE WHEN SELECTOR RING IS FASTENED TO THE BARREL RING AS IN FIG.AS1. IN THIS OPERATION MODE FOREND IS STATIONARY. BOLT CAN BE OPENED BY PULLING THE BOLT HANDLE. CLOSE THE BOLT BY PRESSING THE BOLT RELEASE BUTTON.

FOR 'PUMP-ACTION / MANUAL' MODE; WITH THE BOLT CLOSED, TURN THE SELECTOR RING COUNTER-CLOCKWISE AS FAR AS IT WILL GO WITH THE THUMB OF YOUR HAND HOLDING THE FOREND. KEEPING THE SELECTOR RING IN POSITION (TURNED COUNTER-CLOCKWISE) PULL BACK THE FOREND UNTIL THE SELECTOR RING IS DISCONNECTED FROM THE BARREL RING. THEN RELEASE THE SELECTOR RING SO IT WILL ROTATE CLOCKWISE UNTIL IT REACHES RESTING POSITION. CHECK FIG.AS2 FOR REFERENCE.



SHOTGUN IS IN 'PUMP-ACTION / MANUAL' MODE WHEN THE SELECTOR RING IS UP AGAINST THE BARREL RING AS IN FIG.AS2. IN THIS OPERATION MODE BOLT IS OPENED BY PULLING THE FOREND. CLOSE THE BOLT BY PUSHING THE FOREND FORWARD. WHEN THE BOLT STAYS BACK IN OPEN POSITION, IT WILL BE NECESSARY TO PRESS THE BOLT RELEASE BUTTON FIRST, THEN PUSH THE FOREND FORWARD TO CLOSE THE BOLT.

! WHEN IN PUMP-ACTION / MANUAL MODE, MAKE SURE THAT SELECTOR RING IS SECURELY FASTENED TO THE FOREND-BOLT UNIT. TO VERIFY THIS; PULL BACK THE BOLT VIA BOLT HANDLE, FOREND SHOULD ALSO MOVE BACKWARDS TOGETHER WITH THE BOLT.

! WHEN IN SEMI-AUTOMATIC MODE, MAKE SURE TO USE AMMUNITION THAT GENERATES ENOUGH RECOIL TO FULLY CYCLE THE ACTION MECHANISM.

UNLOADING

! BEFORE UN/LOADING, PUT SAFETY BUTTON TO 'ON/SAFE' POSITION AS EXPLAINED IN SAFETY BUTTON INSTRUCTIONS.

! MAKE SURE THAT BARREL IS POINTED IN A SAFE DIRECTION AT ALL TIMES DURING UN/LOADING.

TO UNLOAD THE SHOTGUN OF AMMUNITION OR TO MAKE SURE IT IS UNLOADED, PERFORM THE FOLLOWING STEPS;

IF IN PUMP-ACTION / MANUAL MODE;

1- PULL THE FOREND ALL THE WAY BACK TO OPEN THE BOLT AND TO EJECT THE SHELL IN THE CHAMBER (IF ANY).

IF THERE IS NO SHELL EJECTED FROM/IN THE CHAMBER, IT DOES NOT NECESSARILY MEAN THAT SHOTGUN IS UNLOADED! THERE MAY BE SHELL/S ON THE CARRIER OR IN THE MAGAZINE TUBE! CONTINUE FOLLOWING UNLOADING THE STEPS!

2- CLOSE THE BOLT BY PUSHING FORWARD THE FOREND.

3- PRESS THE SHELL RELEASE BUTTON. THIS WILL DROP A SHELL ONTO THE CARRIER FROM THE MAGAZINE TUBE IF THERE IS ANY.

4- REPEAT THE STEPS ABOVE 1-2-3-1-2-3... UNTIL ALL SHELLS IN THE MAGAZINE TUBE ARE EJECTED.

5- ONCE LAST SHELL IS EJECTED, BOLT WILL STAY BACK IN OPEN POSITION. VISUALLY AND PHYSICALLY CHECK THE CHAMBER, CARRIER, AND MAGAZINE PORT TO MAKE SURE THAT SHOTGUN IS FULLY UNLOADED.

6- WHEN THE BOLT STAYS BACK IN OPEN POSITION, IT WILL BE NECESSARY TO PRESS THE BOLT RELEASE BUTTON FIRST, THEN PUSH THE FOREND FORWARD TO CLOSE THE BOLT.

IF IN SEMI-AUTOMATIC MODE;

1- PULL THE BOLT HANDLE ALL THE WAY BACK TO OPEN THE BOLT AND TO EJECT THE SHELL IN THE CHAMBER (IF ANY).

IF THERE IS NO SHELL EJECTED FROM/IN THE CHAMBER, IT DOES NOT NECESSARILY MEAN THAT SHOTGUN IS UNLOADED! THERE MAY BE SHELL/S ON THE CARRIER OR IN THE MAGAZINE TUBE! CONTINUE FOLLOWING UNLOADING THE STEPS!

2- CLOSE THE BOLT BY RELEASING THE BOLT HANDLE.

3- PRESS THE SHELL RELEASE BUTTON. THIS WILL DROP A SHELL ONTO THE CARRIER FROM THE MAGAZINE TUBE IF THERE IS ANY.

4- REPEAT THE STEPS ABOVE 1-2-3-1-2-3... UNTIL ALL SHELLS IN THE MAGAZINE TUBE ARE EJECTED.

5- ONCE LAST SHELL IS EJECTED, BOLT WILL STAY BACK IN OPEN POSITION. VISUALLY AND PHYSICALLY CHECK THE CHAMBER, CARRIER, AND MAGAZINE PORT TO MAKE SURE THAT SHOTGUN IS FULLY UNLOADED.

LOADING MAGAZINE TUBE

! BEFORE UN/LOADING, PUT SAFETY BUTTON TO 'ON/SAFE' POSITION AS EXPLAINED IN SAFETY BUTTON INSTRUCTIONS.

! MAKE SURE THAT BARREL IS POINTED IN A SAFE DIRECTION AT ALL TIMES DURING UN/LOADING.

! BEFORE LOADING, MAKE SURE TO USE THE AMMUNITION THAT YOUR SHOTGUN IS CHAMBERED FOR AS INDICATED ON THE BARREL.

! BEFORE INITIAL LOADING, OPEN THE BOLT, VISUALLY AND PHYSICALLY INSPECT THE CHAMBER, THE BARREL, THE RECEIVER AND THE MAGAZINE PORT TO ENSURE THEY ARE FREE OF ANY EXCESS OIL, GREASE, OR ANY OBSTRUCTIONS.

TO LOAD AMMUNITION TO THE MAGAZINE TUBE, PERFORM THE FOLLOWING STEPS;

1- BOLT SHOULD BE CLOSED TO LOAD THE MAGAZINE. CLOSE THE BOLT (BY PRESSING THE BOLT RELEASE BUTTON IF IN SEMI-AUTOMATIC MODE, BY PUSHING FORWARD THE FOREND IF IN PUMP-ACTION MODE).

2- ALIGN THE FRONT PART OF THE SHELL (BRASS AT THE REAR) WITH THE CARRIER / MAGAZINE PORT UNDER THE RECEIVER.

3- PUSH THE FRONT OF THE SHELL UPWARD AGAINST THE CARRIER TO LIFT IT UP, THEN KEEP PUSHING THE SHELL INTO THE MAGAZINE TUBE WITH YOUR THUMB UNTIL IT IS CAUGHT INSIDE BY THE SHELL STOP.

4- REPEAT THIS PROCEDURE UNTIL DESIRED NUMBER OF SHELLS ARE LOADED INTO THE MAGAZINE.

5- DO NOT FORCE AND DO NOT TRY TO EXCEED THE RECOMMENDED CAPACITY OF YOUR SHOTGUN.

LOADING CHAMBER FROM MAGAZINE TUBE

! BEFORE UN/LOADING, PUT SAFETY BUTTON TO 'ON/SAFE' POSITION AS EXPLAINED IN SAFETY BUTTON INSTRUCTIONS.

! MAKE SURE THAT BARREL IS POINTED IN A SAFE DIRECTION AT ALL TIMES DURING UN/LOADING.

IF IN SEMI-AUTOMATIC MODE;

1- LOAD MAGAZINE TUBE AS EXPLAINED IN LOADING MAGAZINE TUBE INSTRUCTIONS.

2- PRESS THE SHELL RELEASE BUTTON. THIS WILL DROP A SHELL ONTO THE CARRIER FROM THE MAGAZINE TUBE.

3- PULL THE BOLT HANDLE ALL THE WAY BACK AND RELEASE IT, TO CYCLE THE BOLT AND TO LOAD THE SHELL ON THE CARRIER INTO THE CHAMBER.

! SHOTGUN IS NOW LOADED, WITH SAFETY BUTTON 'ON/SAFE' POSITION.

IF IN PUMP-ACTION / MANUAL MODE;

1- LOAD MAGAZINE TUBE AS EXPLAINED IN LOADING MAGAZINE TUBE INSTRUCTIONS.

2- PRESS THE SHELL RELEASE BUTTON. THIS WILL DROP A SHELL ONTO THE CARRIER FROM THE MAGAZINE TUBE.

3- PULL THE FOREND ALL THE WAY BACK AND THEN PUSH IT ALL THE WAY FORWARD, TO CYCLE THE BOLT AND TO LOAD THE SHELL ON THE CARRIER INTO THE CHAMBER.

! SHOTGUN IS NOW LOADED, WITH SAFETY BUTTON 'ON/SAFE' POSITION.

LOADING MANUALLY / DIRECTLY INTO CHAMBER

A SHELL CAN BE LOADED MANUALLY / DIRECTLY INTO THE CHAMBER WITHOUT LOADING SHELLS INTO THE MAGAZINE.

1- BOLT SHOULD BE OPEN TO LOAD MANUALLY / DIRECTLY INTO THE CHAMBER. OPEN THE BOLT (BY PULLING THE BOLT HANDLE ALL THE WAY BACK IF IN SEMI-AUTOMATIC MODE, BY PULLING THE FOREND ALL THE WAY BACK IF IN PUMP-ACTION MODE)

2- DROP A SHELL IN THE CORRECT ORIENTATION, WITH BRASS AT THE REAR AND PLASTIC CASE IN THE FRONT, INTO THE EJECTION PORT OPENING.

3- CLOSE THE BOLT (BY RELEASING THE BOLT HANDLE OR BY PRESSING THE BOLT RELEASE BUTTON IF IN SEMI-AUTOMATIC MODE, BY PUSHING THE FOREND ALL THE WAY FORWARD IF IN PUMP-ACTION MODE).

! SHOTGUN IS NOW LOADED, WITH SAFETY BUTTON 'ON/SAFE' POSITION.

FIRING

! IN SEMI-AUTOMATIC MODE, MAKE SURE TO USE AMMUNITION THAT GENERATES ENOUGH RECOIL TO FULLY CYCLE THE ACTION MECHANISM.

! AVOID SHOOTING HEAVY LOADS, SPECIFICALLY 3" (76 mm) ROUNDS, IN PUMP-ACTION / MANUAL MODE.

! IN SEMI-AUTOMATIC MODE, THIS SHOTGUN AUTOMATICALLY FEEDS THE NEXT LIVE ROUND FROM THE MAGAZINE TO THE CHAMBER EACH TIME IT IS FIRED, UNTIL ALL ROUNDS IN THE MAGAZINE ARE FIRED! YOU SHOULD BE AWARE OF THE FACT THAT CHAMBER IS AUTOMATICALLY LOADED AND SHOTGUN WILL FIRE AGAIN IF THE TRIGGER IS PULLED AGAIN!

! IN SEMI-AUTOMATIC MODE, DURING FIRING, THE BOLT AND BOLT HANDLE TRAVELS BACKWARD AND FORWARD WITH CONSIDERABLE FORCE AND SPEED! MAKE SURE TO KEEP HANDS, FINGERS AND OTHER OBJECTS AWAY FROM THEIR ROUTE AND THE EJECTION PORT OPENING!

! DURING FIRING, EMPTY CARTRIDGES WILL BE EJECTED / THROWN OUT OF THE EJECTION PORT WITH A CONSIDERABLE FORCE AND SPEED! MAKE SURE THE PATH OF EJECTION IS CLEAR!

IN SEMI-AUTOMATIC MODE;

1- LOAD THE CHAMBER, AND THE MAGAZINE TUBE IF DESIRED, AS EXPLAINED IN LOADING INSTRUCTIONS.

2- FIRMLY SHOULDER THE STOCK/GUN, HOLD THE GRIP AND FOREND TIGHT, TAKE AIM TO THE TARGET THROUGH SIGHTS.

3- TURN SAFETY BUTTON TO 'OFF/FIRE' POSITION WITHOUT LOOSING THE AIM ON THE TARGET.

4- PULL THE TRIGGER TO FIRE!

5- CHAMBER IS AUTOMATICALLY LOADED, IF THERE IS A SHELL IN THE MAGAZINE TUBE.

6- SHOTGUN WILL FIRE AGAIN IF THE TRIGGER IS PULLED AGAIN!

7- ONCE LAST ROUND IN THE MAGAZINE IS FIRED, BOLT WILL STAY BACK IN OPEN POSITION.

8- TO CONTINUE FIRING, RELOAD THE SHOTGUN AS EXPLAINED IN LOADING INSTRUCTIONS.

9- ONCE FINISHED WITH FIRING, TURN SAFETY BUTTON TO 'ON/SAFE' POSITION.

IN PUMP-ACTION / MANUAL MODE;

1- LOAD THE CHAMBER, AND THE MAGAZINE TUBE IF DESIRED, AS EXPLAINED IN LOADING INSTRUCTIONS.

2- FIRMLY SHOULDER THE STOCK/GUN, HOLD THE GRIP AND FOREND TIGHT, TAKE AIM TO THE TARGET THROUGH SIGHTS.

3- ! IN PUMP-ACTION / MANUAL MODE, WHILE FIRING MAKE SURE TO BE HOLDING/PUSHING THE FOREND FORWARD IN CLOSE BOLT DIRECTION.

4- TURN SAFETY BUTTON TO 'OFF/FIRE' POSITION WITHOUT LOOSING THE AIM ON THE TARGET.

5- PULL THE TRIGGER TO FIRE!

6- PULL THE FOREND ALL THE WAY BACK TO OPEN THE BOLT AND TO EJECT THE EMPTY SHELL IN THE CHAMBER, THEN PUSH THE FOREND ALL THE WAY FORWARD TO CLOSE THE BOLT AND TO LOAD THE SHELL ON THE CARRIER INTO THE CHAMBER.

7- NOW SHOTGUN WILL FIRE AGAIN IF THE TRIGGER IS PULLED AGAIN!

8- REPEAT STEPS ABOVE 5-6-5-6... TO CONTINUE FIRING.

9- ONCE LAST ROUND IN THE MAGAZINE IS FIRED, BOLT WILL STAY BACK IN OPEN POSITION.

10- TO CONTINUE FIRING, RELOAD THE SHOTGUN AS EXPLAINED IN LOADING INSTRUCTIONS.

11- ONCE FINISHED WITH FIRING, TURN SAFETY BUTTON TO 'ON/SAFE' POSITION.

ACCESSORIES & ADJUSTMENTS

TELESCOPIC STOCK & CHEEK REST

THIS SHOTGUN IS EQUIPPED WITH A 5 POSITION TELESCOPIC STOCK, AND AN ADJUSTABLE CHEEK REST, SO THAT OPERATOR CAN CUSTOMIZE HANDLING OF THE GUN.

WHILE PRESSING THE TELESCOPIC POSITION BUTTON UPWARDS, MOVE THE STOCK BACKWARD OR FORWARD TO DESIRED POSITION, THEN RELEASE THE TELESCOPIC POSITION BUTTON. MAKE SURE POSITION BUTTON LOCKS PROPERLY BY TRYING TO MOVE THE STOCK WITHOUT PRESSING THE BUTTON.

CHEEK REST CAN BE LIFTED/LOWERED TO DESIRED POSITION SIMPLY BY USING ITS LOCK WHEEL. TURN THE WHEEL COUNTER-CLOCKWISE TO UNLOCK, MOVE THE CHEEK REST UPWARD OR DOWNWARD TO DESIRED POSITION, TURN THE WHEEL CLOCKWISE TO LOCK THE POSITION.

REAR SIGHT

THIS SHOTGUN IS EQUIPPED WITH AN ADJUSTABLE REAR SIGHT, SO THAT OPERATOR CAN CUSTOMIZE PERSONAL LINE OF SIGHT AND ZERO. THE REAR SIGHT CAN BE ADJUSTED FOR BOTH WINDAGE AND ELEVATION.

WINDAGE ADJUSTMENT SCREW IS LOCATED ON THE RIGHT SIDE OF THE REAR SIGHT ASSEMBLY. USE A PROPER SIZE SCREWDRIVER. ROTATE CLOCKWISE TO MOVE THE POINT-OF-IMPACT ON THE TARGET TO RIGHT. ROTATE COUNTER-CLOCKWISE TO MOVE THE POINT-OF-IMPACT ON THE TARGET TO LEFT.

ELEVATION ADJUSTMENT SCREW IS LOCATED ON TOP OF THE REAR SIGHT ASSEMBLY. USE A PROPER SIZE SCREWDRIVER. ROTATE CLOCKWISE TO MOVE THE POINT-OF-IMPACT ON THE TARGET LOWER. ROTATE COUNTER-CLOCKWISE TO MOVE THE POINT-OF-IMPACT ON THE TARGET HIGHER.

CHOKE TUBE & DOORBUSTER

! MAKE SURE THAT SHOTGUN IS FULLY UNLOADED AS EXPLAINED IN UNLOADING INSTRUCTIONS BEFORE REMOVING OR INSTALLING A CHOKE TUBE OR MUZZLE BRAKE OR DOORBUSTER.

! NEVER FIRE THE SHOTGUN WITHOUT A CHOKE TUBE (OR MUZZLE BRAKE/DOORBUSTER) INSTALLED. PERMANENT DAMAGE TO BARREL CHOKE THREADS WILL RESULT.

THIS SHOTGUN IS EQUIPPED WITH A THREADED CHOKE SYSTEM (AND AN INTERNAL CHOKE TUBE WITH CYLINDER CONSTRICTION INSTALLED ON THE BARREL) SO THAT OPERATOR CAN USE ALTERNATIVE CHOKES OR DIFFERENT ACCESSORIES LIKE A MUZZLE BRAKE/DOOR BUSTER.

TO REMOVE CHOKE TUBE FROM BARREL; USE THE CHOKE TUBE WRENCH SUPPLIED. ALIGN STEPPED END OF THE WRENCH WITH SLOTS ON CHOKE TUBE, THEN PUSH THE WRENCH INTO THE CHOKE TUBE. TURN WRENCH COUNTER-CLOCKWISE TO LOOSEN THE CHOKE TUBE ON BARREL. UNSCREW CHOKE TUBE WITH YOUR FINGERS TO REMOVE IT COMPLETELY OUT OF THE BARREL.

! BEFORE INSTALLING A CHOKE TUBE, CHECK THREADS OF THE BARREL AND THE CHOKE TUBE TO MAKE SURE THAT THEY ARE CLEAN AND UNDEFORMED. DO NOT USE BENT OR DEFORMED CHOKE TUBES/BARREL THREADS.

TO INSTALL CHOKE TUBE TO BARREL; LIGHTLY OIL THE THREADS ON CHOKE TUBE AND BARREL. PLACE CHOKE TUBE INTO BARREL MUZZLE IN THE CORRECT ORIENTATION; THREADED SIDE FACING OUTSIDE. START THREADING THE CHOKE TUBE CLOCKWISE WITH YOUR FINGERS CAREFULLY AVOIDING CROSS-THREADING. START USING THE CHOKE TUBE WRENCH WHEN YOU NEED. ALIGN STEPPED END OF THE WRENCH WITH SLOTS ON THE CHOKE TUBE, THEN PUSH THE WRENCH INTO THE CHOKE TUBE. TURN THE WRENCH CLOCKWISE TO TIGHTEN THE CHOKE TUBE. INTERNAL CHOKE TUBES SHOULD FIT FLUSH WITH THE BARREL WHEN PROPERLY INSTALLED. DO NOT OVER-TIGHTEN!

! PERIODICALLY REMOVE AND CLEAN CHOKE TUBES AND THREADS ON THE BARREL.

! PERIODICALLY CHECK THAT CHOKE TUBE IS TIGHT AND FIRMLY SEATED ON THE BARREL.

! SHOOT SLUGS AND SINGLE BULLETS ONLY WITH CYLINDER CONSTRICTION CHOKE TUBES.

DIS/ASSEMBLY & MAINTENANCE

! EVERY FIREARM SHOULD BE INSPECTED AND CLEANED PERIODICALLY TO REMAIN IN GOOD FUNCTIONING AND SAFE CONDITION.

! IT IS RECOMMENDED TO MAKE A FIELD STRIP AND AN OVERALL CLEANING EVERY 250 ROUNDS.

! IT IS RECOMMENDED TO CLEAN THE BARREL AFTER EVERY 100 ROUNDS TO PREVENT THE ACCUMULATION OF LEAD AND PLASTIC RESIDUES.

! BARREL SHOULD BE IMMEDIATELY INSPECTED AND CLEANED IF THERE IS ANY REASON TO SUSPECT THAT IT IS OBSTRUCTED!

! FIELD STRIP SHOULD BE PERFORMED BY THE OPERATOR PERIODICALLY FOR PROPER CLEANING & MAINTENANCE.

! DETAILED DIS/ASSEMBLY SHOULD ONLY BE PERFORMED BY A QUALIFIED GUNSMITH!

! MAKE SURE THAT SHOTGUN IS FULLY UNLOADED AS EXPLAINED IN UNLOADING INSTRUCTIONS BEFORE STARTING DIS/ASSEMBLY, MAINTENANCE, CLEANING OPERATIONS.

! WEAR EYE PROTECTION DURING DIS/ASSEMBLY, MAINTENANCE, CLEANING OPERATIONS.

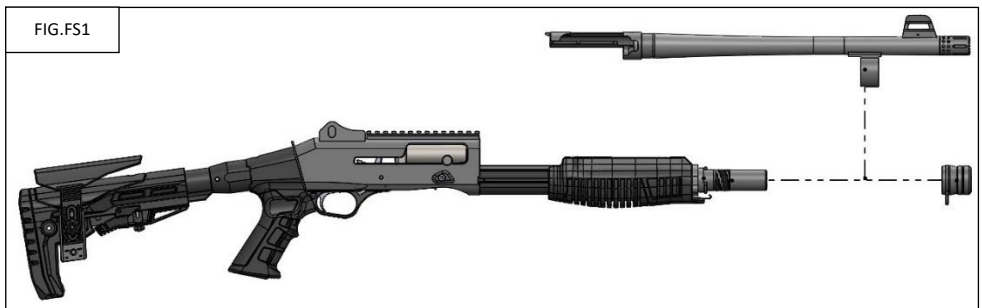
FIELD STRIP

1- VERIFY THE SHOTGUN IS FULLY UNLOADED, THEN CLOSE THE BOLT (BY RELEASING THE BOLT HANDLE OR BY PRESSING THE BOLT RELEASE BUTTON IF IN SEMI-AUTOMATIC MODE, BY PUSHING FORWARD THE FOREND IF IN PUMP-ACTION MODE).

2- FOR EASY DISASSEMBLY, SWITCH TO PUMP-ACTION / MANUAL MODE AS EXPLAINED IN ACTION SELECTION INSTRUCTIONS.

3- UNSCREW THE MAGAZINE CAP BY TURNING IT COUNTER-CLOCK WISE. WHEN IT IS CLEAR OFF THE THREADS, REMOVE IT FROM THE MAGAZINE TUBE SIMPLY BY SLIDING IT FORWARD.

4- PUSH THE BARREL ASSEMBLY FORWARD OUT OF THE RECEIVER BY SLIDING BARREL RING ALONG THE MAGAZINE TUBE. CHECK FIG.FS1 FOR REFERENCE.



5- WHILE HOLDING THE SHOTGUN IN PLACE WITH ONE HAND, WITH OTHER HAND PULL BOLT HANDLE SIDEWAYS TO REMOVE IT OUT OF THE BOLT ASSEMBLY. CHECK FIG.FS2 FOR REFERENCE.



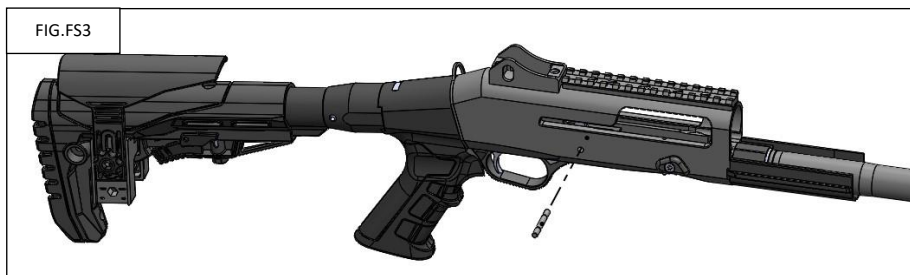
6- SLOWLY PUSH FOREND FORWARD ALONG THE MAGAZINE TUBE TO REMOVE ACTION PARTS (BOLT ASSEMBLY, ACTION ARM AND FOREND ASSEMBLY) OUT OF THE RECEIVER.

7- ONCE ACTION PARTS (BOLT ASSEMBLY, ACTION ARM AND FOREND ASSEMBLY) ARE OUT OF THE RECEIVER, REMOVE BOLT ASSEMBLY FROM ACTION ARM SIMPLY BY LIFTING IT UP.

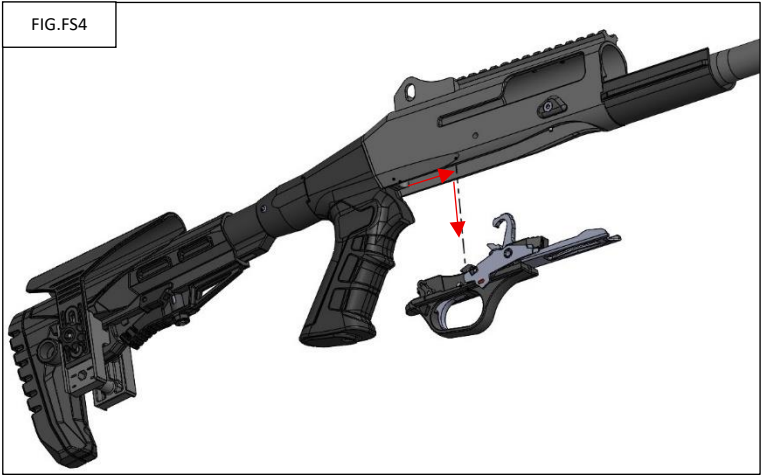
8- WHILE HOLDING THE ACTION ARM IN PLACE WITH ONE HAND, WITH OTHER HAND HOLD FOREND AND ROTATE THE ACTION SELECTOR RING TO DISASSEMBLE/SEPARATE ACTION ARM AND FOREND ASSEMBLY FROM EACH OTHER.

9- SLOWLY PUSH THE ACTION SPRING FORWARD ALONG THE MAGAZINE TUBE TO REMOVE IT OUT.

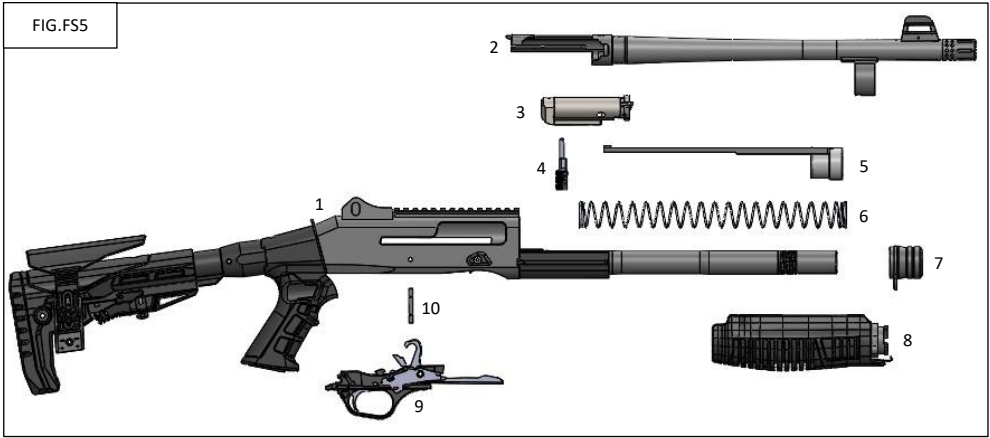
10- PUSH THE RECEIVER PIN (\varnothing 4 mm) THROUGH RECEIVER AND OUT OF IT. USE A SIMPLE PIN PUNCH OR SOMETHING THIN (SMALLER THAN \varnothing 4 mm RADIUS) LIKE THE TIP OF A PEN. CHECK FIG.FS3 FOR REFERENCE.



11- WHILE PUSHING THE BOLT RELEASE BUTTON, SLIDE TRIGGER ASSEMBLY FORWARD AND DOWN TO REMOVE IT OUT OF RECEIVER. CHECK FIG.FS4 FOR REFERENCE.



12- FIELD STRIP IS COMPLETED WITH FOLLOWING PARTS AND ASSEMBLIES SPREAD OUT; 1-RECEIVER & STOCK & MAGAZINE TUBE ASSEMBLY 2-BARREL ASSEMBLY 3-BOLT ASSEMBLY 4-BOLT HANDLE 5-ACTION ARM 6-ACTION SPRING 7-MAGAZINE CAP 8-FOREND ASSEMBLY 9-TRIGGER ASSEMBLY 10-RECEIVER PIN CHECK FIG.FS5 FOR REFERENCE.



! FIELD STRIP IS ENOUGH FOR PERIODIC CLEANING & MAINTENANCE OPERATIONS.

! FURTHER DETAILED DISASSEMBLY SHOULD ONLY BE PERFORMED BY A QUALIFIED GUNSMITH !

FIELD ASSEMBLY

1- WHILE PUSHING THE BOLT RELEASE BUTTON, INSERT TRIGGER ASSEMBLY INTO THE RELATED RECEIVER OPENING SLIDING IT BACKWARD AND UP. ALIGN CORRESPONDING HOLES OF TRIGGER ASSEMBLY AND RECEIVER. CHECK FIG.FS4 FOR REFERENCE.

2- ONCE TRIGGER ASSEMBLY AND RECEIVER HOLES ARE ALIGNED, PUSH THE RECEIVER PIN INTO RECEIVER THROUGH ITS HOLE. SLIGHTLY HAMMER IF NECESSARY. CHECK FIG.FS3 FOR REFERENCE.

3- SLOWLY PULL THE ACTION SPRING BACKWARD THROUGH-ALONG MAGAZINE TUBE TO PLACE IT BACK TO ITS ORIGINAL POSITION.

4- PLACE BOLT ASSEMBLY BACK TO ITS ORIGINAL POSITION ON ACTION ARM, ALIGNING THE TAB OF ACTION ARM TO THE CUT SLOT AT THE BOTTOM OF BOLT ASSEMBLY.

5- SLOWLY SLIDE THE ACTION ARM & BOLT ASSEMBLY ON MAGAZINE TUBE BACKWARDS INTO RECEIVER, WITH MAGAZINE TUBE GOING THROUGH THE ACTION ARM HOLE. SLIGHTLY PULL THE ACTION ARM BACKWARDS SO BOLT ASSEMBLY ENTERS INTO THE RECEIVER.

6- ONCE BOLT ASSEMBLY IS IN RECEIVER, ALIGN THE NOTCH ON BOLT HANDLE WITH THE NOTCH ON BOLT ASSEMBLY, THEN PUSH THE BOLT HANDLE INTO THE BOLT ASSEMBLY TO LOCK IT BACK TO ITS ORIGINAL POSITION. CHECK FIG.FS2 FOR REFERENCE.

7- SLOWLY SLIDE THE FOREND ASSEMBLY ON MAGAZINE TUBE BACKWARDS (IN CORRECT ORIENTATION!) WITH MAGAZINE TUBE GOING THROUGH IT. APPROACH FOREND ASSEMBLY TO THE ACTION ARM, ROTATE ACTION SELECTOR RING AND SLIGHTLY PUSH FOREND TOWARDS ACTION ARM, THEN RELEASE THE ACTION SELECTOR RING TO ASSEMBLE/CONNECT FOREND ASSEMBLY TO THE ACTION ARM.

8- SLOWLY APPROACH THE BARREL ASSEMBLY TO RECEIVER, POSITIONING THE BARREL EXTENSION TO SIT INTO THE GAP BETWEEN RECEIVER AND BOLT ASSEMBLY, WITH MAGAZINE TUBE GOING THROUGH THE BARREL RING. SLIDING THE BARREL RING ON MAGAZINE TUBE BACKWARDS, SLIGHTLY PUSH THE BARREL ASSEMBLY INTO THE RECEIVER TO FULLY SEAT IT INSIDE.

9- SCREW THE MAGAZINE CAP TO THE FRONT OF BARREL RING, SLIDING IT ON MAGAZINE TUBE BACKWARDS THEN TURNING IT CLOCKWISE. SCREW IT FINGER TIGHT!

10- FIELD ASSEMBLY IS COMPLETED. CONDUCT FUNCTION TESTS, SPECIFICALLY ON CRITICAL BUTTONS; BOLT RELEASE BUTTON, SHELL RELEASE BUTTON, SAFETY BUTTON. VERIFY SHOTGUN IS ASSEMBLED CORRECTLY BEFORE FIRING LIVE AMMO!

CLEANING

CLEANING THE BARREL;

! IT IS RECOMMENDED TO CLEAN THE BARREL AFTER FIRING, AFTER STORING FOR A LONG TIME, AND IMMEDIATELY IF DIRT, WATER, DEBRIS OR MUD GETS INTO THE BARREL OR CHAMBER.

! IT IS RECOMMENDED TO CLEAN THE BARREL AFTER EVERY 100 ROUNDS TO PREVENT THE ACCUMULATION OF LEAD AND PLASTIC RESIDUES.

! BARREL SHOULD BE IMMEDIATELY INSPECTED AND CLEANED IF THERE IS ANY REASON TO SUSPECT THAT BARREL IS OBSTRUCTED!

1- REMOVE THE CHOKE TUBE AS EXPLAINED IN CHOKE TUBE INSTRUCTIONS. WIPE OFF RELATED BARREL AND CHOKE TUBE THREADS TO CLEAN DEBRIS AND RESIDUE.

2- SOAK A PATCH WITH HIGH QUALITY CARBON SOLVENT FOR FIREARMS. USING A CLEANING ROD AND JAG, PUSH THE SOAKED PATCH UP AND DOWN THE BARREL FROM CHAMBER TO MUZZLE.

3- CLEAN THE BARREL FROM CHAMBER TO MUZZLE TO ENSURE ALL DEBRIS AND RESIDUE HAVE BEEN REMOVED. COPPER BRUSH CAN BE USEFUL FOR REMOVING STUBBORN DEPOSITS.

4- SCRUB ALL SURFACES OF BARREL EXTENSION AND CHAMBER USING CLEANING PATCHES.

5- SOAK A PATCH WITH HIGH QUALITY GUN OIL. USING A CLEANING ROD AND JAG PUSH IT FROM CHAMBER TO BORE. ALTERNATE A DRY AND A WET-OILY PATCH, REPEAT THE PROCESS.

6- RUN A DRY PATCH THROUGH THE BORE TO ENSURE ONLY A LIGHT COAT OF OIL REMAINS IN THE BARREL.

7- INSTALL THE CHOKE TUBE BACK TO BARREL.

CLEANING THE BOLT ASSEMBLY;

1- WIPE OFF THE OUTSIDE SURFACES OF THE BOLT ASSEMBLY, CLEAN THE EXTRACTOR AND ITS UNDERNEATH.

2- AFTER CLEANING THE BOLT ASSEMBLY, DRY PARTS OFF AND APPLY A SMALL DROP OF OIL BETWEEN BOLT CARRIER AND BOLT HEAD.

3- APPLY A SMALL DROP OF OIL FROM REAR OF THE BOLT TOWARD FIRING PIN HOLE.

4- APPLY A THIN COAT OF OIL TO BOLT RAIL SURFACES.

5- WIPE OFF THE BOLT HEAD FACE. THIS AREA SHOULD REMAIN CLEAN AND DRY.

CLEANING THE TRIGGER ASSEMBLY;

1- WIPE OFF TRIGGER ASSEMBLY COMPONENTS GENTLY TO REMOVE DEBRIS AND RESIDUE.

2- MAKE SURE THAT TRIGGER ASSEMBLY COMPONENTS ARE CLEAN AND DRY AND LIGHTLY OILED.

CLEANING THE RECEIVER;

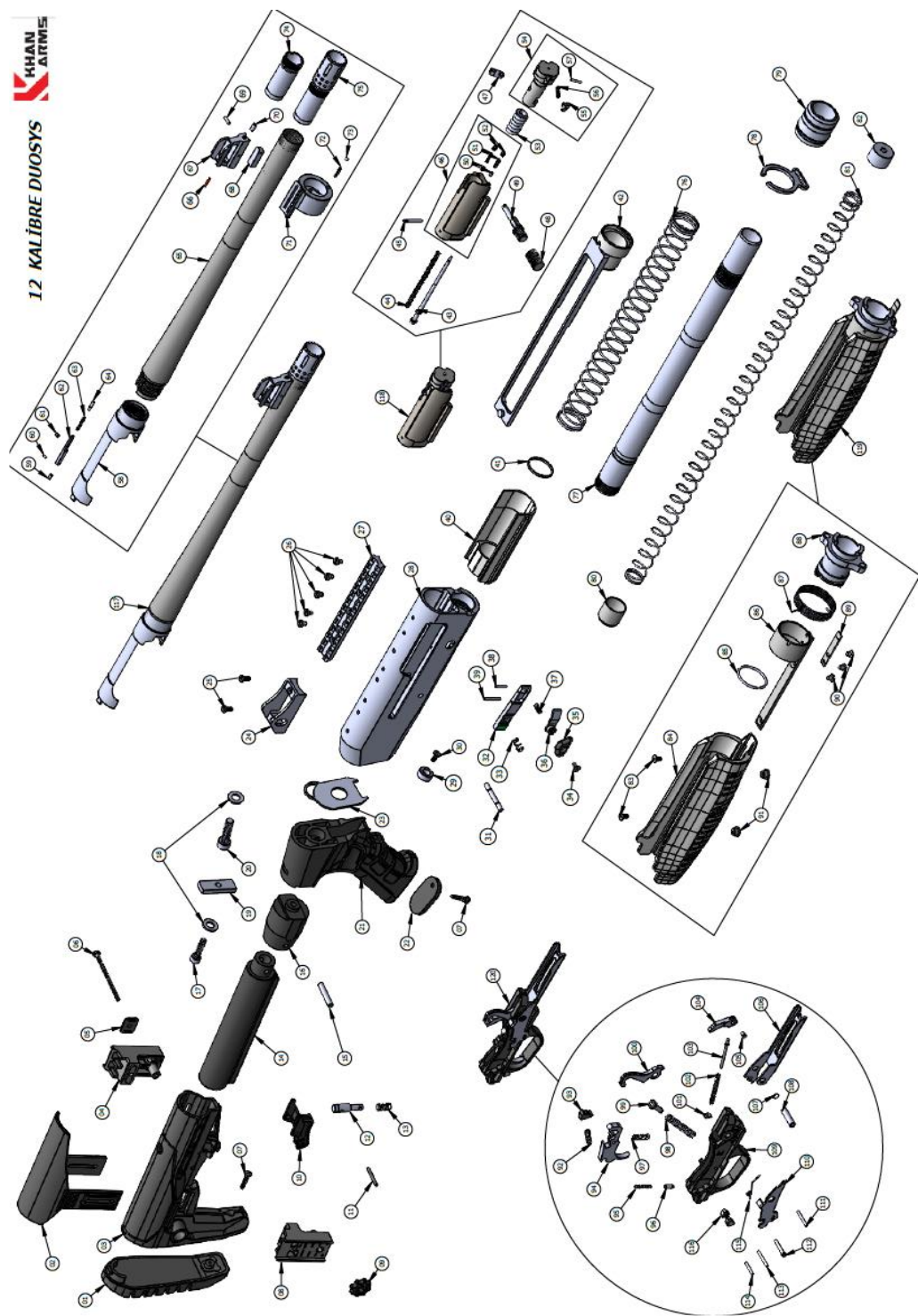
1- CLEAN THE INTERIOR SURFACES OF THE RECEIVER USING GUN CLEANER AND CLEANING PATCHES.

2- LIGHTLY OIL INSIDE OF THE RECEIVER, BOLT RAILS, AND CARRIER LATCH ASSEMBLY.

3- WIPE OFF MAGAZINE TUBE TO REMOVE DEBRIS AND RESIDUE, THEN LIGHTLY OIL.

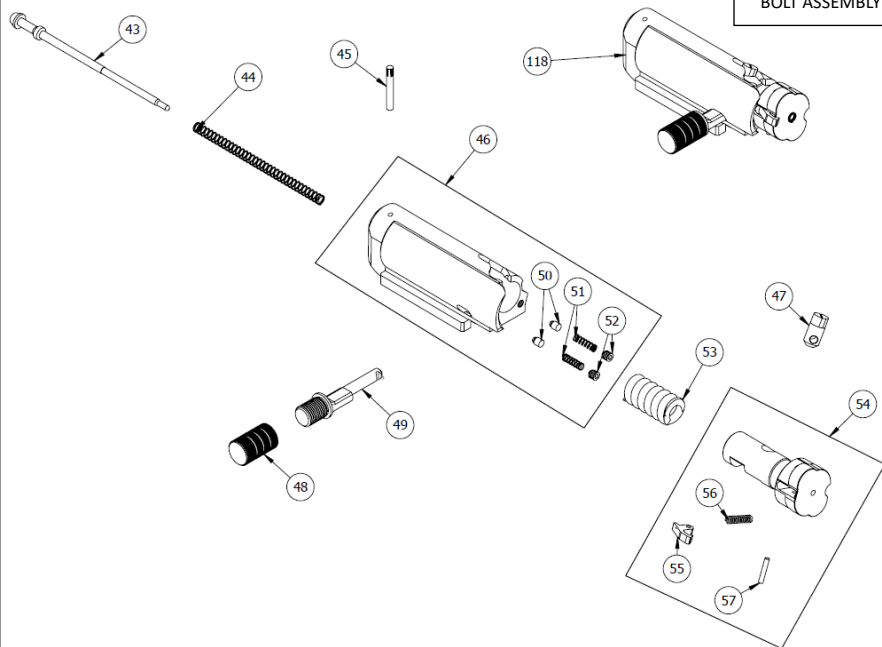
PREVENTIVE/PREDICTIVE PART REPLACEMENT CYCLES FOR MILITARY & LAW ENFORCEMENT USE

<u>FIRING PIN PART#43</u>	<u>EVERY 1000 ROUNDS</u>
<u>FIRING PIN SPRING PART#44</u>	<u>EVERY 1000 ROUNDS</u>
<u>BOLT HANDLE SET PARTS#48 #49</u>	<u>EVERY 1000 ROUNDS</u>
<u>ACTION SPRING PART#76</u>	<u>EVERY 1000 ROUNDS</u>
<u>ACTION ARM PART#42</u>	<u>EVERY 1000 ROUNDS</u>
<u>TRIGGER ASSEMBLY PART#120</u>	<u>EVERY 1000 ROUNDS</u>
<u>LOCKING HEAD ASSEMBLY PART#54</u>	<u>EVERY 1000 ROUNDS</u>
<u>FOREND ASSEMBLY PART#119</u>	<u>EVERY 1000 ROUNDS</u>
<u>MAGAZINE TUBE SET PARTS#40 #41 #77 #80 #81 #82</u>	<u>EVERY 1000 ROUNDS</u>
<u>LATCH & BUTTON SET PARTS#32 #33 #34 #35 #36 #37 #38 #39</u>	<u>EVERY 1000 ROUNDS</u>

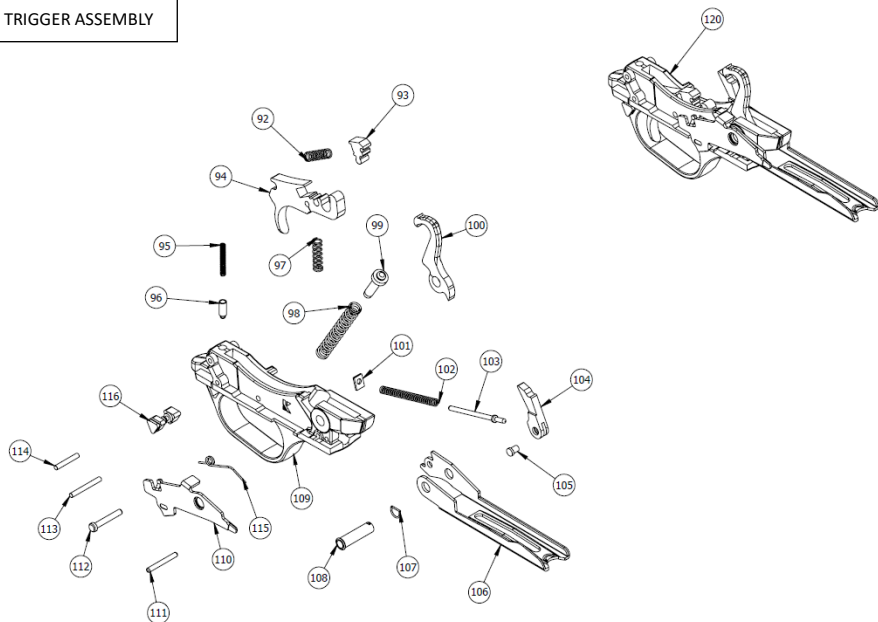


PART NO#	PART DESCRIPTION	PART NO#	PART DESCRIPTION
01	RECOIL PAD	61	EJECTOR SCREW
02	CHEEK REST	62	EJECTOR FRAME
03	STOCK	63	EJECTOR SPRING
04	CHEEK REST EAR-LEFT	64	EJECTOR PIN
05	CHEEK REST EAR SPACER	65	BARREL TUBE
06	CHEEK REST LOCK SCREW	66	TRITIUM/FIBER OPTIC TUBE
07	RECOIL PAD SCREW	67	FRONT SIGHT
08	CHEEK REST EAR-RIGHT	68	FRONT SIGHT BASE
09	CHEEK REST LOCK WHEEL	69	FRONT SIGHT PIN
10	TELESCOPIC POSITION BUTTON	70	FRONT SIGHT SCREW
11	TELESCOPIC ASSEMBLY PIN	71	BARREL RING
12	TELESCOPIC POSITION PIN	72	MAGAZINE CAP LOCK SPRING
13	TELESCOPIC POSITION SPRING	73	MAGAZINE CAP LOCK PIN
14	STOCK TUBE	74	CHOKE TUBE
15	STOCK CONNECTOR PIN	75	DOOR BUSTER MUZZLE BRAKE
16	STOCK CONNECTOR	76	ACTION SPRING
17	STOCK CONNECTOR SCREW	77	MAGAZINE TUBE
18	STOCK/GRIP SCREW WASHER	78	SLING STUD FOREND
19	STOCK CONNECTOR SPACER	79	MAGAZINE CAP
20	GRIP SCREW	80	MAGAZINE FOLLOWER
21	GRIP	81	MAGAZINE SPRING
22	GRIP BASE	82	MAGAZINE TAP
23	SLING STUD STOCK	83	FOREND LOCK SCREW
24	REAR SIGHT ASSEMBLY	84	FOREND
25	REAR SIGHT SCREW	85	FOREND RING
26	PICATINNY RAIL SCREW	86	ACTION SELECTOR HOUSING
27	PICATINNY RAIL	87	ACTION SELECTOR SPRING
28	RECEIVER	88	ACTION SELECTOR RING
29	RECEIVER TAMPON	89	ACTION SELECTOR HOUSING PLATE
30	RECEIVER TAMPON SCREW	90	ACTION SELECTOR HOUSING PLATE SCREW
31	RECEIVER PIN	91	FOREND LOCK HEX
32	CARRIER LATCH	92	DISCONNECTOR SPRING
33	CARRIER LATCH SPRING	93	DISCONNECTOR
34	RELEASE BUTTON CAP SCREW	94	TRIGGER
35	RELEASE BUTTON CAP	95	SAFETY PLUNGER SPRING
36	RELEASE BUTTON	96	SAFETY PLUNGER
37	RELEASE BUTTON SPRING	97	TRIGGER SPRING
38	RELEASE BUTTON PIN	98	HAMMER SPRING
39	CARRIER LATCH PIN	99	HAMMER SPRING CAP
40	FOREND GUIDE	100	HAMMER
41	FOREND GUIDE RING	101	LIFTER SPRING GUIDE STOPER
42	ACTION ARM	102	LIFTER SPRING
43	FIRING PIN	103	LIFTER SPRING GUIDE
44	FIRING PIN SPRING	104	LIFTER
45	FIRING PIN RETAINING PIN	105	LIFTER RIVET
46	BOLT, PARTIAL	106	CARRIER
47	PIN	107	HAMMER PIN RING
48	BOLT HANDLE CAP	108	HAMMER PIN
49	BOLT HANDLE	109	TRIGGER GUARD
50	DETENT	110	SHELL RELEASE BUTTON
51	DETENT SPRING	111	HAMMER STOPER PIN
52	DETENT SCREW	112	TRIGGER MAIN PIN
53	SPRING	113	TRIGGER FIX PIN
54	LOCKING HEAD ASSEMBLY	114	SAFETY PLUNGER RETAINING PIN
55	EXTRACTOR	115	SHELL RELEASE BUTTON SPRING
56	EXTRACTOR SPRING	116	SAFETY BUTTON
57	EXTRACTOR PIN	117	BARREL ASSEMBLY
58	BARREL EXTENSION	118	BOLT ASSEMBLY
59	EJECTOR SPRING STOPER	119	FOREND ASSEMBLY
60	EJECTOR RIVET	120	TRIGGER ASSEMBLY

BOLT ASSEMBLY



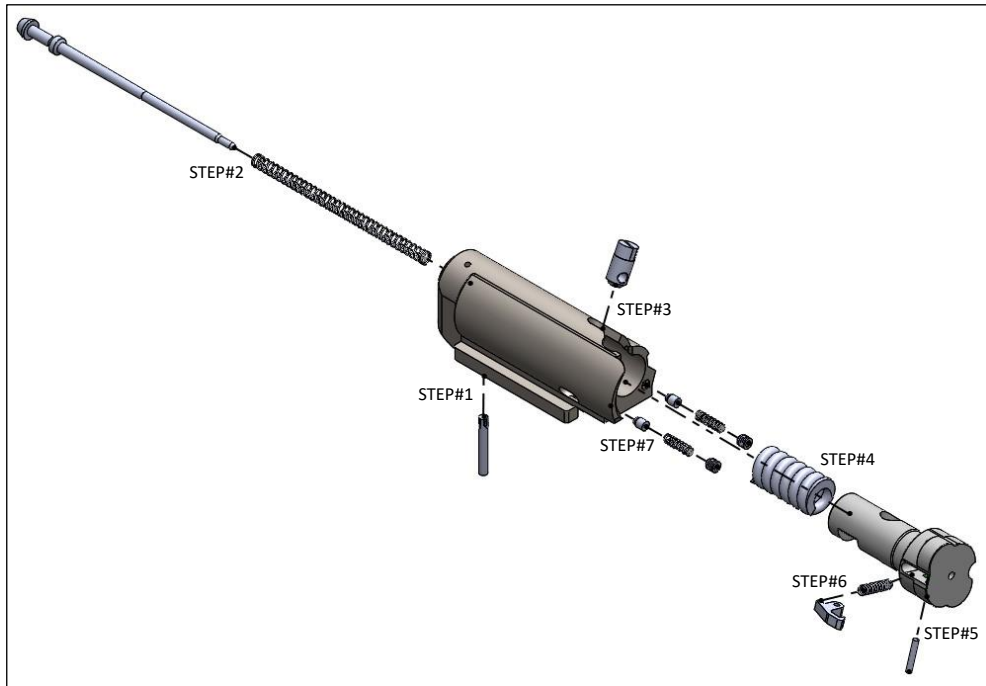
TRIGGER ASSEMBLY



DIS/ASSEMBLY SCHEMATICS – BOLT ASSEMBLY

FOR STEP#1, USE A \varnothing 1.5 mm PIN PUNCH TO DRIVE THE FIRING PIN RETAINING PIN (PART#45) OUT FROM THE TOP TOWARDS THE BOTTOM OF BOLT. A NEW FIRING PIN RETAINING PIN (PART#45) IS RECOMMENDED IF THE ORIGINAL IS REMOVED.

FOR STEP#5, USE A \varnothing 1.5 mm PIN PUNCH TO DRIVE THE EXTRACTOR PIN (PART#57) OUT FROM THE TOP TOWARDS THE BOTTOM OF THE LOCKING HEAD. A NEW EXTRACTOR PIN (PART#57) IS RECOMMENDED IF THE ORIGINAL IS REMOVED.



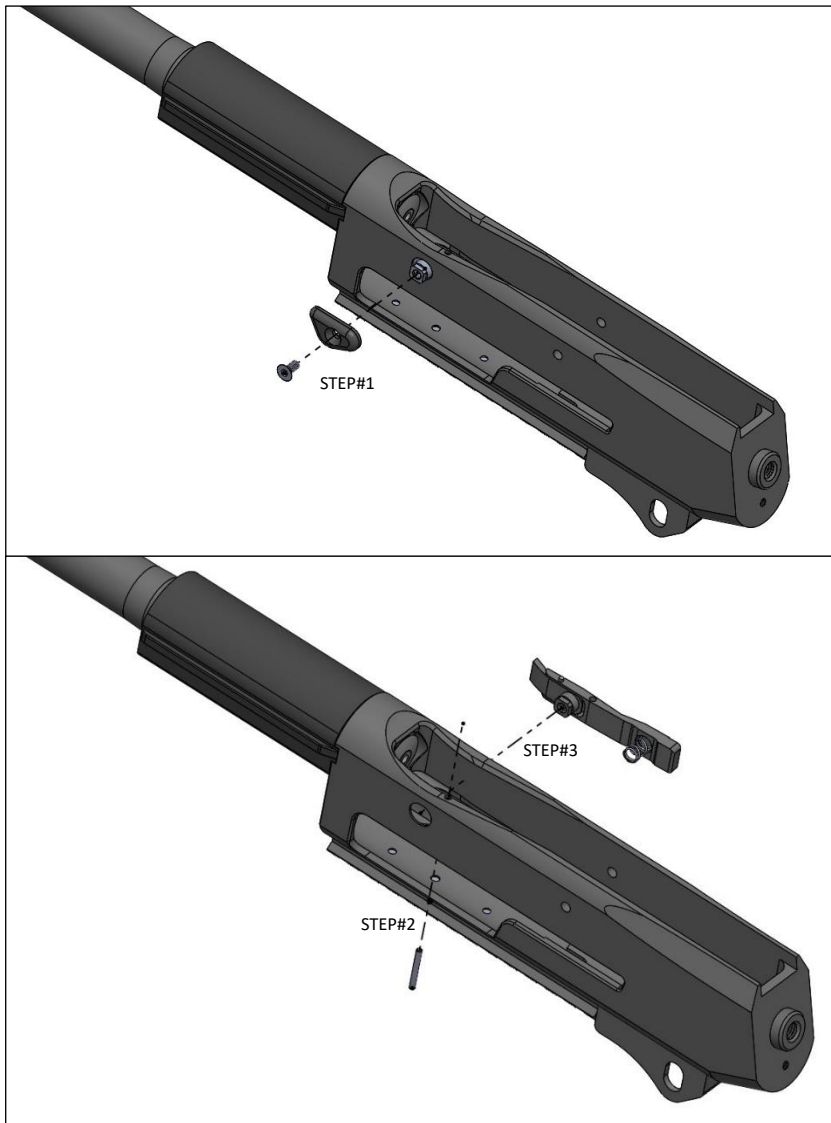
FOLLOW STEPS IN REVERSE ORDER FOR REASSEMBLY; STEP # 7 – 6 – 5 – 4 – 3 – 2 – 1 !

DIS/ASSEMBLY SCHEMATICS – CARRIER LATCH & RELEASE BUTTON SET

FOR STEP#1, USE A T15 TORX SCREWDRIVER TO REMOVE THE RELEASE BUTTON CAP SCREW (PART#34) FROM THE RELEASE BUTTON CAP, THEN REMOVE THE BUTTON CAP (PART#35).

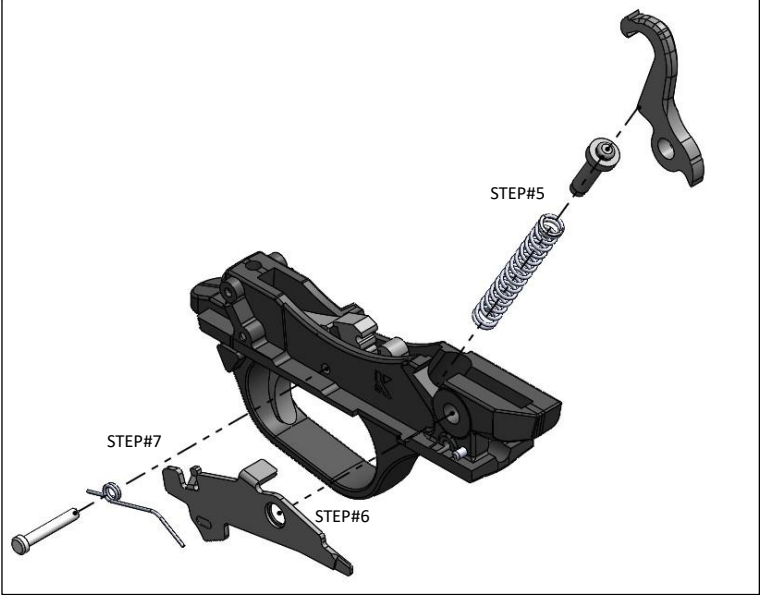
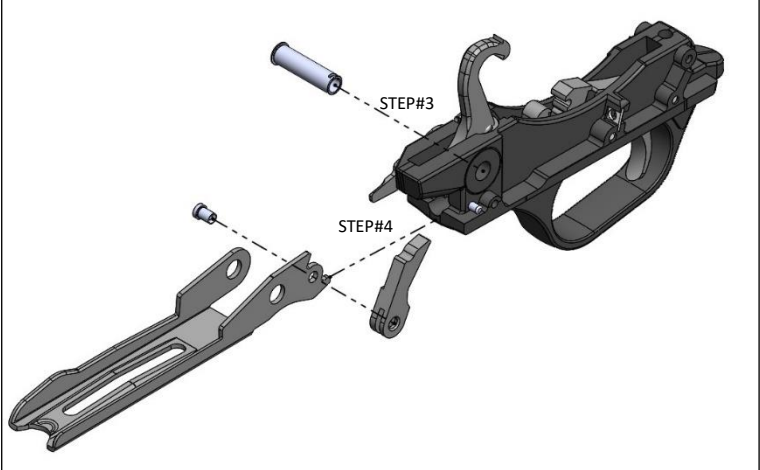
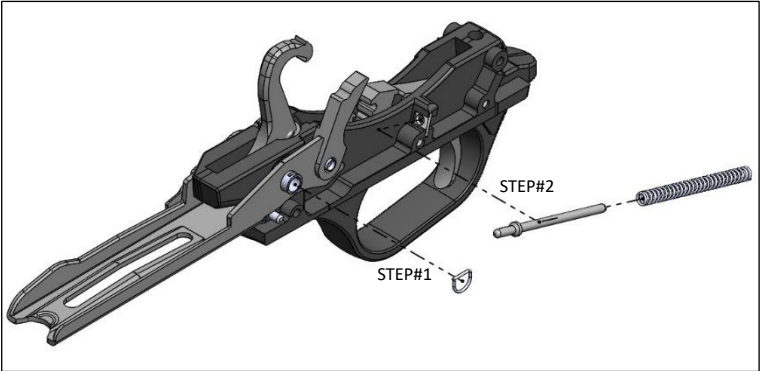
! APPLY A DROP OF PROPER GUN ADHESIVE ON ITS THREADS WHILE REASSEMBLING THE RELEASE BUTTON CAP SCREW.

FOR STEP#2, USE A \varnothing 2 mm PIN PUNCH TO DRIVE THE CARRIER LATCH PIN (PART#39) OUT FROM THE BOTTOM TOWARDS THE TOP OF RECEIVER. A NEW CARRIER LATCH PIN (PART#39) IS RECOMMENDED IF THE ORIGINAL IS REMOVED.

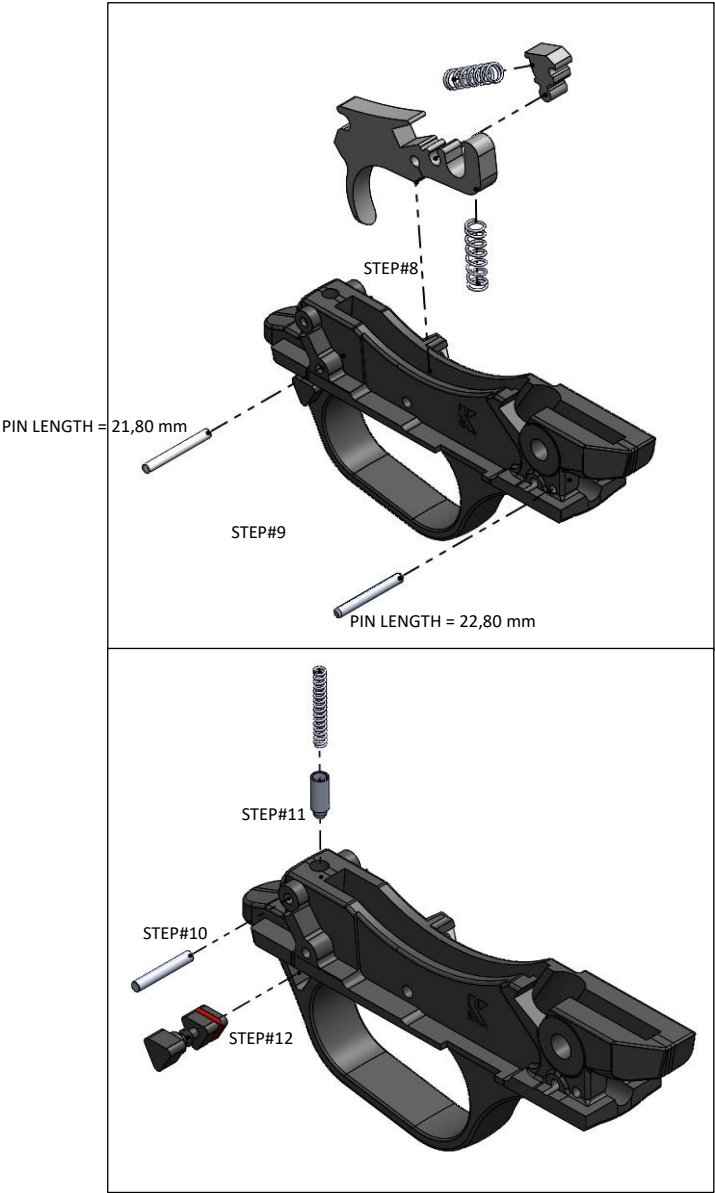


FOLLOW STEPS IN REVERSE ORDER FOR REASSEMBLY; STEP # 3 – 2 – 1 !

DIS/ASSEMBLY SCHEMATICS – TRIGGER ASSEMBLY



DIS/ASSEMBLY SCHEMATICS – TRIGGER ASSEMBLY



FOLLOW STEPS IN REVERSE ORDER FOR REASSEMBLY; STEP # 12 – 11 – 10 – 9 – 8 – 7 – 6 – 5 – 4 – 3 – 2 – 1 !

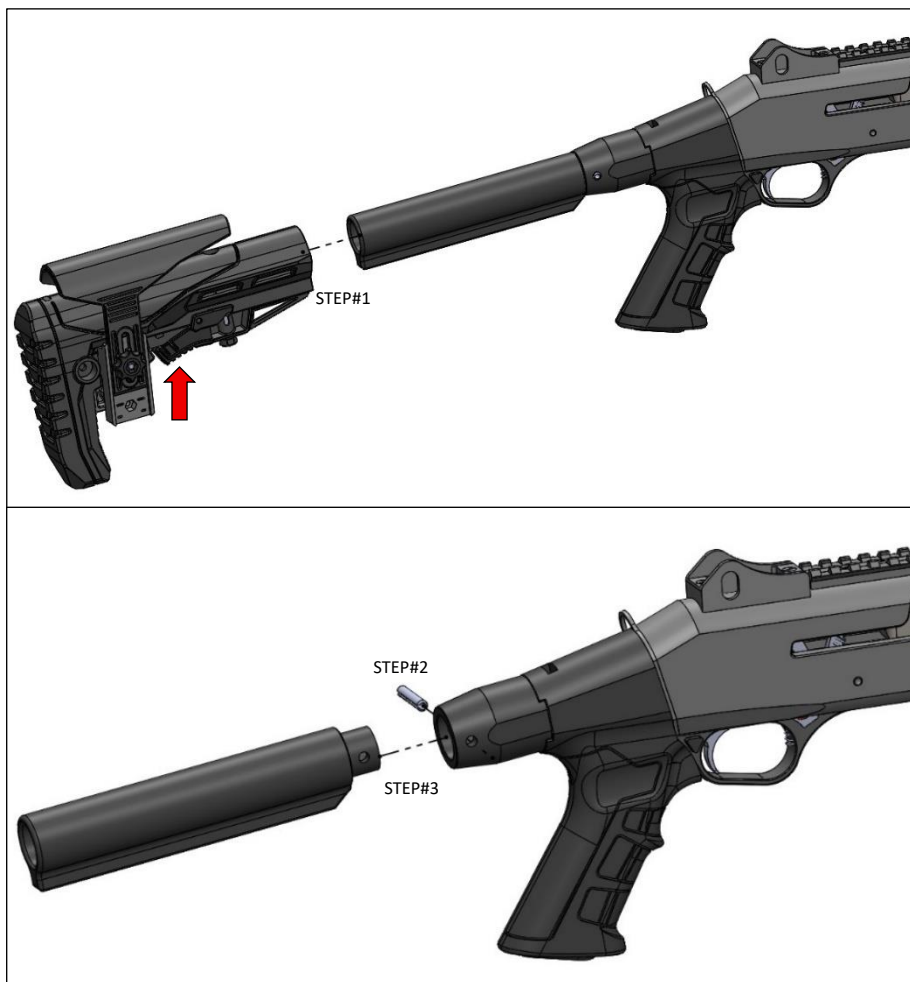
DIS/ASSEMBLY SCHEMATICS – STOCK

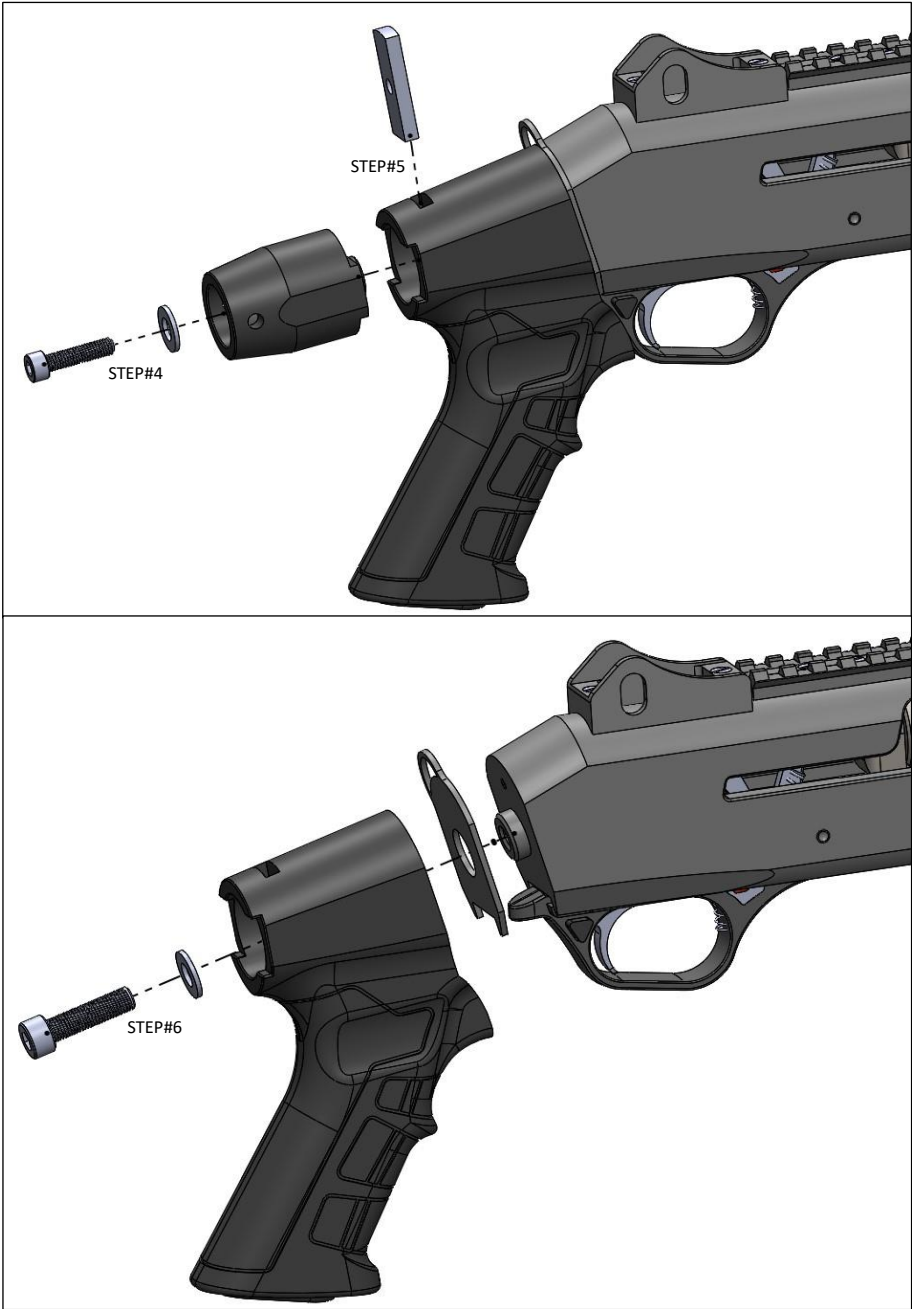
FOR STEP#1, PRESS HARD THE TELESCOPIC POSITION BUTTON (PART#10) UPWARDS TO REMOVE THE STOCK (PART#3) OUT OF THE STOCK TUBE(PART#14).

FOR STEP#2, USE A Ø 4 mm PIN PUNCH TO DRIVE THE STOCK CONNECTOR PIN (PART#15) OUT.

FOR STEP#4, USE A 6mm ALLEN WRENCH TO UN/SCREW THE STOCK CONNECTOR SCREW (PART#17).

FOR STEP#6, USE A 8mm ALLEN WRENCH TO UN/SCREW THE GRIP SCREW (PART#20).



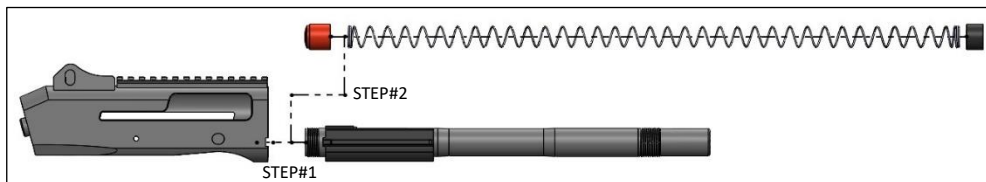


FOLLOW STEPS IN REVERSE ORDER FOR REASSEMBLY; STEP # 6 – 5 – 4 – 3 – 2 – 1 !

DIS/ASSEMBLY SCHEMATIC – MAGAZINE TUBE

FOR STEP#1, APPLY HEAT VIA A TORCH TO RELATED AREA AT THE BOTTOM OF THE RECEIVER, IN ORDER TO BREAK THE ADHESIVE BETWEEN RECEIVER AND MAGAZINE TUBE. THEN ROTATE THE MAGAZINE TUBE COUNTER-CLOCKWISE TO CLEAR IT FROM THE THREADS AND REMOVE IT OUT OF THE RECEIVER.

! APPLY A FEW DROPS OF PROPER GUN ADHESIVE ON ITS THREADS WHILE REASSEMBLING THE MAGAZINE TUBE.





KAYHAN AV TUFEKLERİ SANAYİ VE DİŞ TİCARET LİMİTED SİRKETİ

BARBAROS MAH. MİLLET CAD. NO:77/2

ATASEHİR İSTANBUL 34746 TÜRKİYE

TEL: +90 216 6327555

INFO@KHANARMS.COM

WWW.KHANARMS.COM